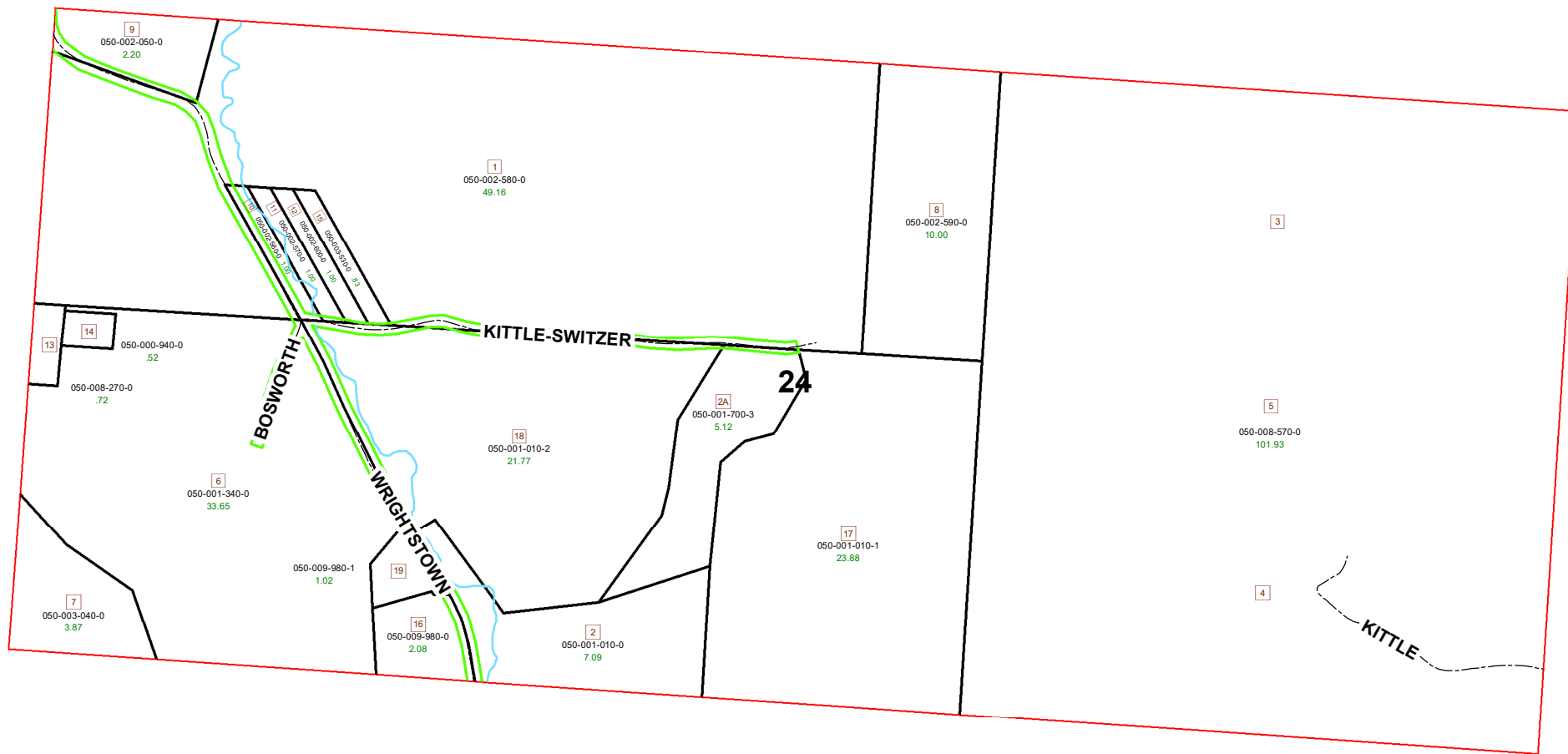
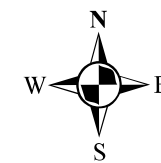


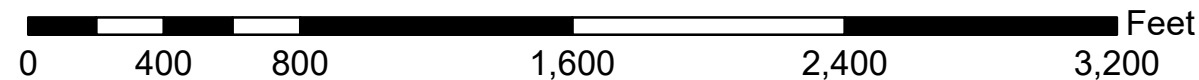
HOMER TOWNSHIP FRACTION 24 R13 TWP 7 MORGAN COUNTY, OH



PIN	VOL	PAGE	Owner	LegalDescr	Acre
050-000-940-0	OR218	2275	BUTT BRIAN E	R13 T07 S00 FR 24 SD 14	0.52
050-008-270-0	OR218	2275	BUTT BRIAN E	R13 T07 S00 FR 24 SD 13	0.72
050-001-340-0	D.V 142	199	BUTT NEIL E & JEANNINE S	R13 T07 S00 FR 24 SD 06	33.65
050-001-010-0	D.V 194	344	CONKLE CHARLES R & MANNETTE	R13 T07 S00 FR 24 SD 2	7.098
050-002-050-0	OR98	483	ELLIS DODRALL A & PATSY R	R13 T07 S00 FR 24 SD 9 S	2.2
050-002-590-0	D.V 193	1	EUBANKS DEMEN L ET3AL	R13 T07 S00 FR 24 SD 8	10
050-002-570-0	D.V 149	197	EUBANKS EDMAN LEVI	R13 T07 S00 FR 24 SD 11	1
050-002-560-0	D.V 149	197	EUBANKS EDMAN LEVI	R13 T07 S00 FR 24 SD 10	1
050-002-580-0	D.V 193	1	EUBANKS EDMEN L ET3AL	R13 T07 S00 FR 24 SD 1	49.16
050-002-600-0	D.V 149	195	EUBANKS PHILLIP ARDEN	R13 T07 S00 FR 24 SD 12	1
050-003-530-0	OR224	3426	EUBANKS SHERRILL A	R13 T07 S00 FR 24 SD 15	0.838
050-003-040-0	OR66	547	FLAGNER DAVID B & KATHLEEN O'TOOLE	R13 T07 S00 FR 24 SURVIV	3.87
050-009-980-1	OR95	573	HODGE CARL RYDER & KELLY SUE	R13 T07 S00 SD 19 FR 24 E	1.026
050-001-010-1	OR210	2137	KOHLER KEITH M & SHARON R	R13 T07 S00 SD 17 FR 24 S	23.88
050-001-700-3	OR210	2137	KOHLER KEITH M & SHARON R	R13 T07 S00 FR 24 SD 2A	5.123
050-008-570-0	OR209	2769	SOUTHALL PAUL W & RHONDA J	R13 T07 S00 FR 24 SD-2-4-	101.9
050-009-980-0	D.V 168	751	WESTFALL RONNIE L & VICKIE L	R13 T07 S00 FR 24 SD 16 E	2.08
050-001-010-2	OR212	3127	WILLIAMS BOYD ET4AL	SD 18 FR 24	21.78



Boundaries	
----- Hidden	----- ROW
----- Hydro	----- Section
----- Roads	----- Lot
----- County	----- Parcel
----- Township	----- Parcels



Disclaimer: The information that these maps contains is for reference purposes only. Please bring any errors to the attention of the Engineer's Office staff.
Thank you